

Contactless Hall-IC Linear Sensor

MIDORI LP-10HA Series



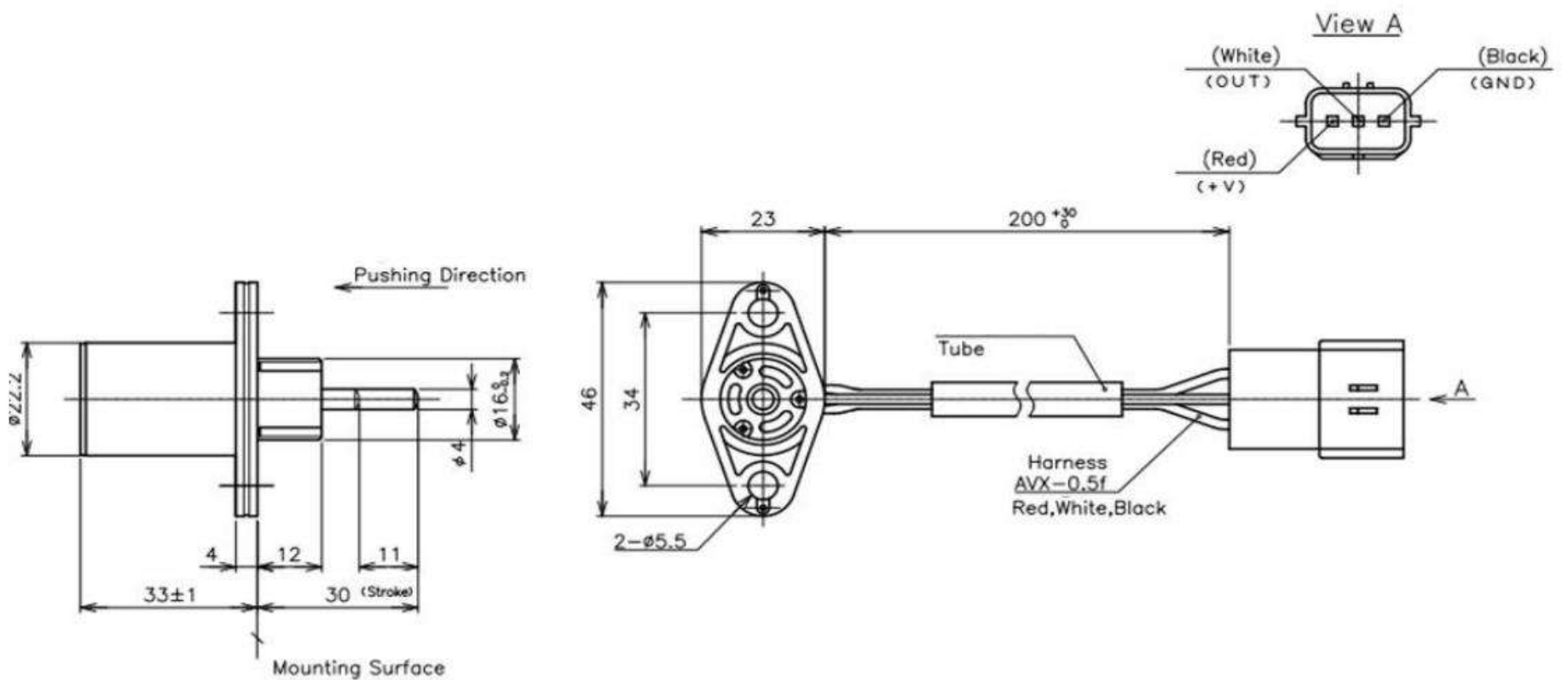
General

- Contactless Hall-IC Linear Sensor
- Effective Electrical Travel: 10mm
- Absolute Linearity: $\pm 1.6\%FS$
- Ratio Output
- With Return Spring

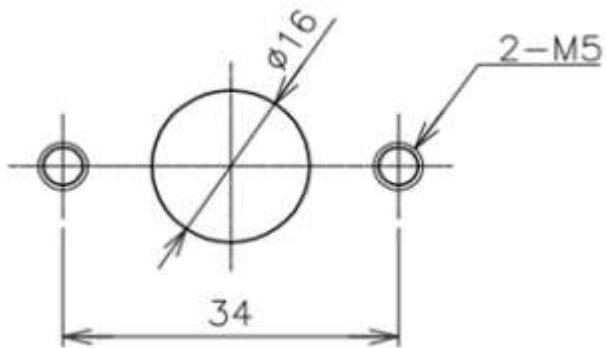
Material

- Housing: PBT
- Shaft: Stainless Steel
- Bearing: Copper Alloy

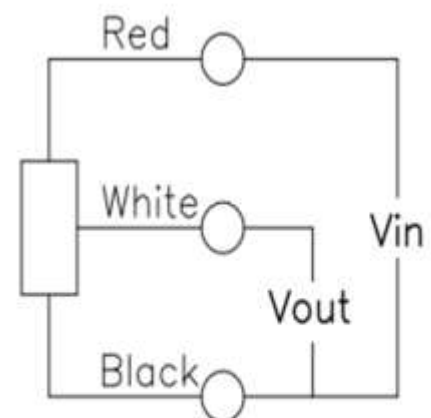
Dimension (mm)



Mounting(mm)

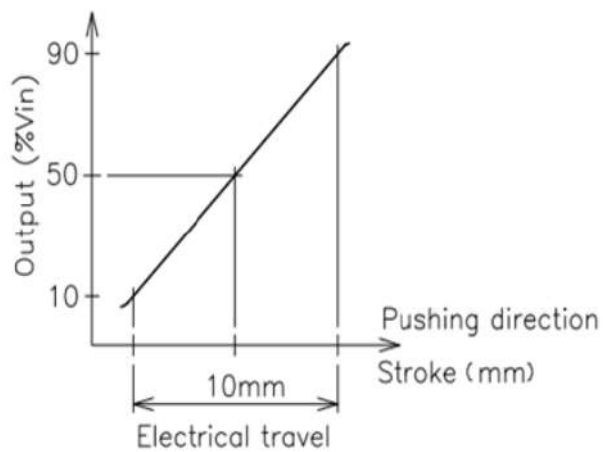


Schematic



• Red, White, Black indicate wire colors.

Output Characteristics



Specifications

Electrical Specifications

Effective Electrical Travel	10mm
Output Range	10~90%Vin
Absolute Linearity	±1.6%FS FS=10mm
Input Voltage	DC5V±0.5V
Load Resistance	10~100KΩ MIN.
Supply Current	16mA MAX.
Insulation Resistance	100MΩMIN./DC50V
Output Resolution	10bit (0~100%Vin)
Temp. Characteristics (-40~100°C)	±0.3mm (±3.0%FS) *Reference Temp. 25°C

Mechanical Specifications

Total Mechanical Travel	11mm±1mm
Friction	0.8N~2.45N
Stopper Strength	98N MIN.
Radial Load Tolerance	Approx. 51g

Environmental Specifications

Life Cycles	10Million Cycle MIN.
Category Temp. Range	-40~+100°C (No condensation)
Storage Temp. Range	-40~+100°C (No condensation)
Vibration	98m/S ² 200~2000Hz
Shock	1000m/S ² (100G) 3axis 3times
EMS	100V/m 200~1000Hz
ESD (Case~Each Terminal)	±25KV
ESD (Each Terminal)	±25KV
IP Level	IP65 (Except mounting surface and connector end)

Handling Instruction

- Do not use this sensor as a variable resistor.
- This product may be influence from external magnetic field.
- Use this sensor in the place where is protected from ESD.