

Contactless Hall-IC Tilt Angle Sensor

MIDORI UV-3HF Series



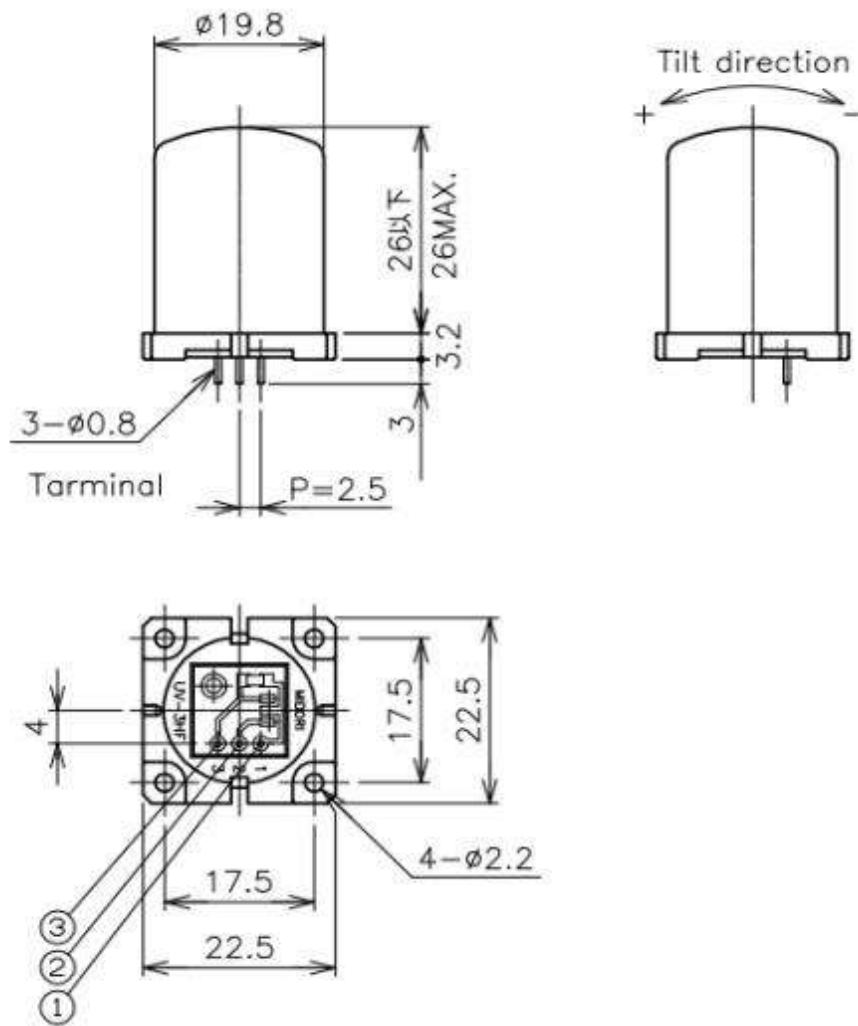
General

- Single Axis Tilt Angle Sensor
- Effective Electrical Tilt Angle : $\pm 20^\circ$
- Center Based Linearity : $\pm 4\%FS$

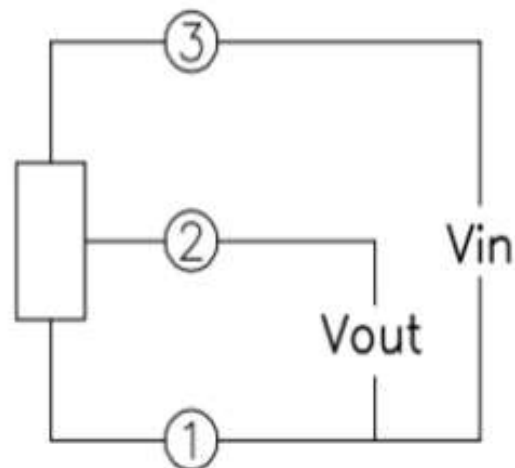
Material

- Housing: PBT
- Cover: Aluminum

Dimension (mm)

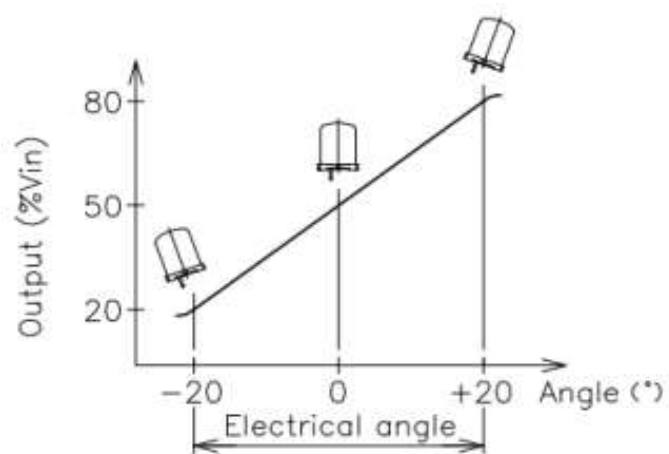


Schematic



• 1,2,3 indicate Land No.

Output Characteristics



Specifications

Electrical Specifications

Effective Electrical Tilt Angle	±20°
Tilt Sensitivity	0.5° MAX.
Output Range	20~80%Vin
Output Sensitivity	1.05 (~1.75)%Vin/°
Index Point	50%±5%Vin
Center Based Linearity	±4%FS (FS=40°)
Input Voltage	DC5V ±0.5V
Temp. Characteristics -30~+80°C (Reference Temp: 25°C)	At 0° : 0.5° At ±20°: 1.5°
Load Resistance	10KΩ MIN.
Supply Current	10mA MAX.
Insulation Resistance	100MΩ/ DC50V MIN.

Mechanical Specifications

Response Time	1 Sec. MAX.
Total Mechanical Tilt Angle	±20° MIN.
Weight	Approx. 8g

Environmental Specifications

Category Temperature Range	-30~+80°C
Storage Temperature Range	-30~+80°C

Handling Instruction

- Do not use Hall-IC sensors as a variable resistor.
- This product may be influence from external magnetic field.
- Use this sensor in the place where is protected from ESD.