

# Contactless Hall-IC Tilt Angle Sensor

## MIDORI UV-00H Series



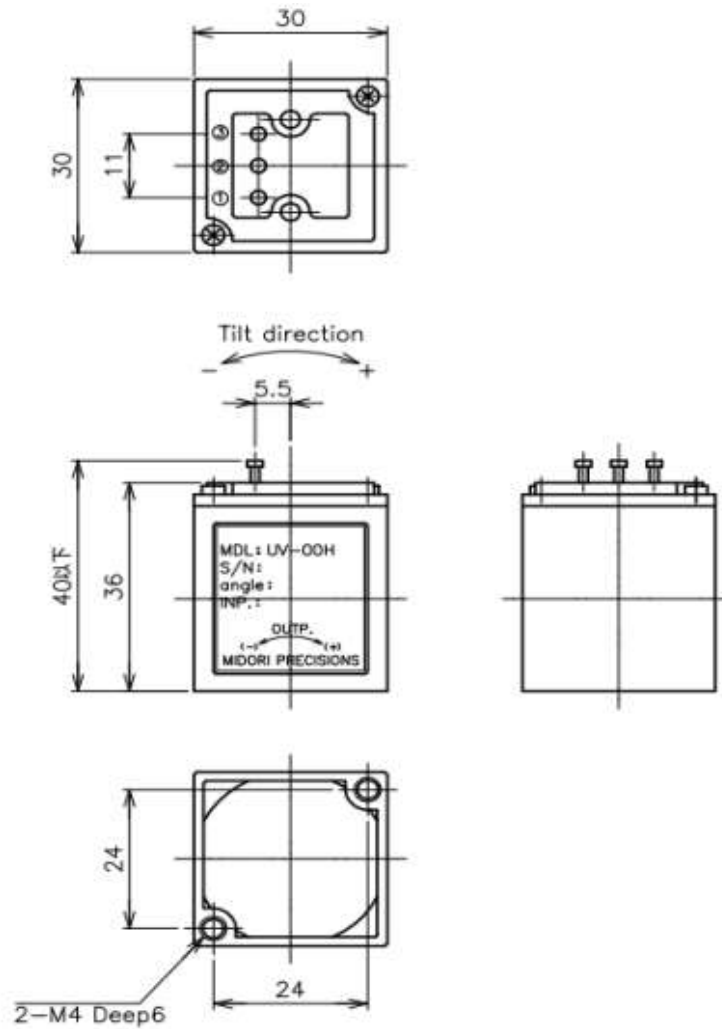
### General

- Single Axis Tilt Angle Sensor
- Effective Electrical Tilt Angle :  $\pm 30^\circ$ ,  $\pm 45^\circ$ ,  $\pm 60^\circ$ (STD)
- Center Based Linearity :  $\pm 2\%$ FS (Tilt Angle  $\pm 30^\circ$ )  
:  $\pm 4\%$ FS (Tilt Angle  $\pm 45^\circ$ ,  $\pm 60^\circ$ )

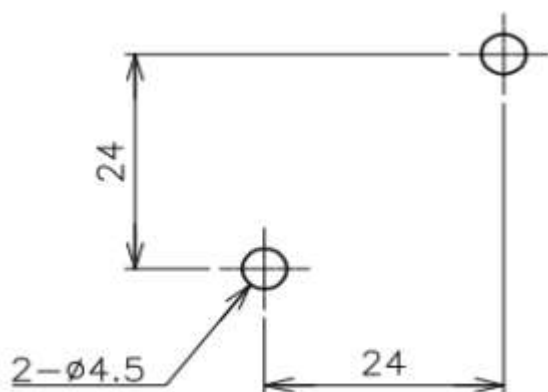
### Material

- Housing: PBT

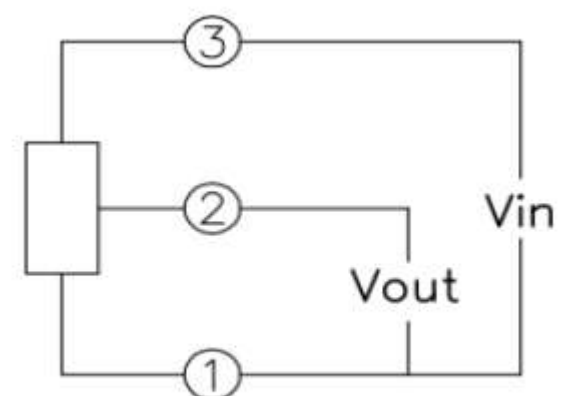
### Dimension (mm)



### Mounting

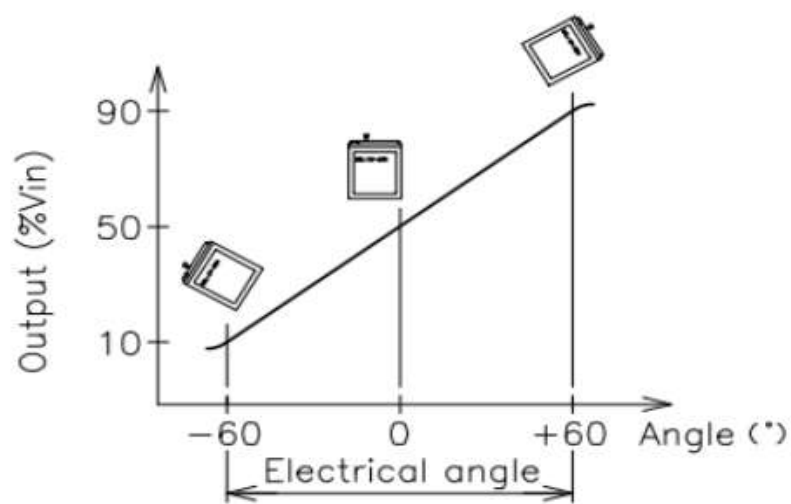


### Schematic



• ①, ②, ③ : Terminal No.

# Output Characteristics



## Specifications

### Electrical Specifications

Effective Electrical Tilt Angle	$\pm 30^\circ, \pm 45^\circ, \pm 60^\circ$
Tilt Sensitivity	0.5° MAX. (Tilt Angle $\pm 30^\circ$ ) / 0.8° MAX. (Tilt Angle $\pm 45^\circ$ and $\pm 60^\circ$ )
Output Sensitivity	0.54%Vin/ °
Index Point	50% $\pm$ 5%Vin
Center Based Linearity	$\pm 2\%$ FS (FS=60°) / $\pm 4\%$ FS (FS=90° and 120°)
Load Resistance	10K $\Omega$ MIN.
Input Voltage	DC5V $\pm$ 0.5V
Temp. Characteristics -20~+80°C (Reference Temp: 25°C)	At 0° : $\pm 2^\circ$ At $\pm 20^\circ$ : $\pm 6^\circ$
Supply Current	10mA MAX.
Insulation Resistance	100M $\Omega$ /DC50V MIN.

### Mechanical Specifications

Response Time	Approx. 0.5 Sec. (Step Response)
Total Mechanical Tilt Angle	130°
Weight	Approx. 35g

### Environmental Specifications

Category Temperature Range	-20~+80°C
Storage Temperature Range	-20~+80°C

## Handling Instruction

- Do not use Hall-IC sensors as a variable resistor.
- This product may be influence from external magnetic field.
- Use this sensor in the place where is protected from ESD.